

NACOME CAMP &



# ELOW TO THE FUTURE

EST 1940

RETREAT CENTER

**A Campaign to  
Ensure NaCoMe for  
Generations to Come**





Dear Friends,

In 1940 the Beaver Dam Springs Resort was purchased by the Synod of the Presbyterian Church. Since then, countless people have had life-changing experiences along the creek that flows through NaCoMe Camp and Retreat Center - a baptismal reminder for thousands of families, children, and adults.

Little did the founders know how one small act of faith would flow through the generations.

Taking its name from the three Presbyteries that shared ownership at its birth, the water of faith continues to flow through NaCoMe today, as NaCoMe serves over 5,600 people per year on-site through residential summer camp and year-round retreat programs.

In the 80 years since its' birth, the leaders of NaCoMe have acted in faith in response to God's call, in order to ensure those faithful waters continue to flow. But today we are challenged to ensure that NaCoMe continues *Flowing to the Future*.

In order to sustain NaCoMe, strengthen its financial sustainability, and serve the families of our region, we must increase the capacity of our ministry. To do this we must increase the available meeting space and adult guest housing, improve our ability to welcome guests, and improve housing for the staff called to serve guests year-round. The good news? There is already a demand from campers and groups for expansion.

In the spring of 2019, in partnership with Kaleidoscope, inc, a leading partner in site-planning for camps and retreat centers nationally, the Board of NaCoMe created a facilities master plan that would ensure the sustainability and impact of this ministry for generations to come. Then, in the fall of 2019 we engaged leaders from across the region to help align our plans with the needs of the community.

Now as NaCoMe begins its 80th year of ministry, we have an opportunity to ensure the waters of faith continue to *Flow to the Future* at NaCoMe for generations to come.

We are excited to share the plans for NaCoMe in this prospectus. We invite you to prayerfully consider how you might support this effort, as NaCoMe *Flows to the Future*.

Sincerely,

Reverend Steve Thomas and Reverend Warner Durnell



# Leadership

## CAMPAIGN STEERING COMMITTEE

Campaign Chair: Rev. Warner Durnell & Rev. Steve Thomas

Board/Former Board Chair: Hank McCall

Alumni Chair: Julie Thomas

Leadership Gifts Chair: Mark McCaw

## Mission Statement

NaCoMe provides camps and retreats for all ages to build community, connect with God, and renew spirits.

# Balance Sheet December 31st 2019

## ASSETS

Current Assets	\$101,901.66
Fixed Assets	\$901,219.04
<b>Total Assets</b>	<b>\$1,003,120.70</b>

## LIABILITY AND EQUITY

Current Liabilities	\$7,773.65
Long Term Liabilities	\$15,035.78
Equity	\$980,311.27
<b>Total Liabilities and Equity</b>	<b>\$1,003,120.70</b>

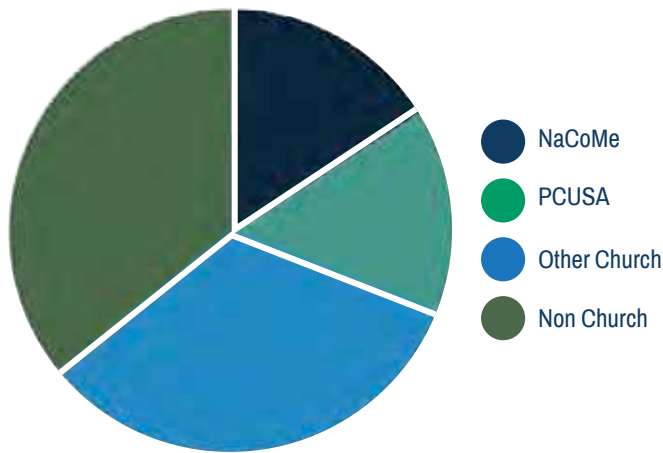


# The Need

For generations leaders at NaCoMe have taken great care to steward our facilities in order to continue to serve children, families, and congregations of the region.

Today the growing usage of the NaCoMe site has allowed us to stabilize operations and strengthen our ministry. Continuing to increase our usage is critical to our long-term ministry.

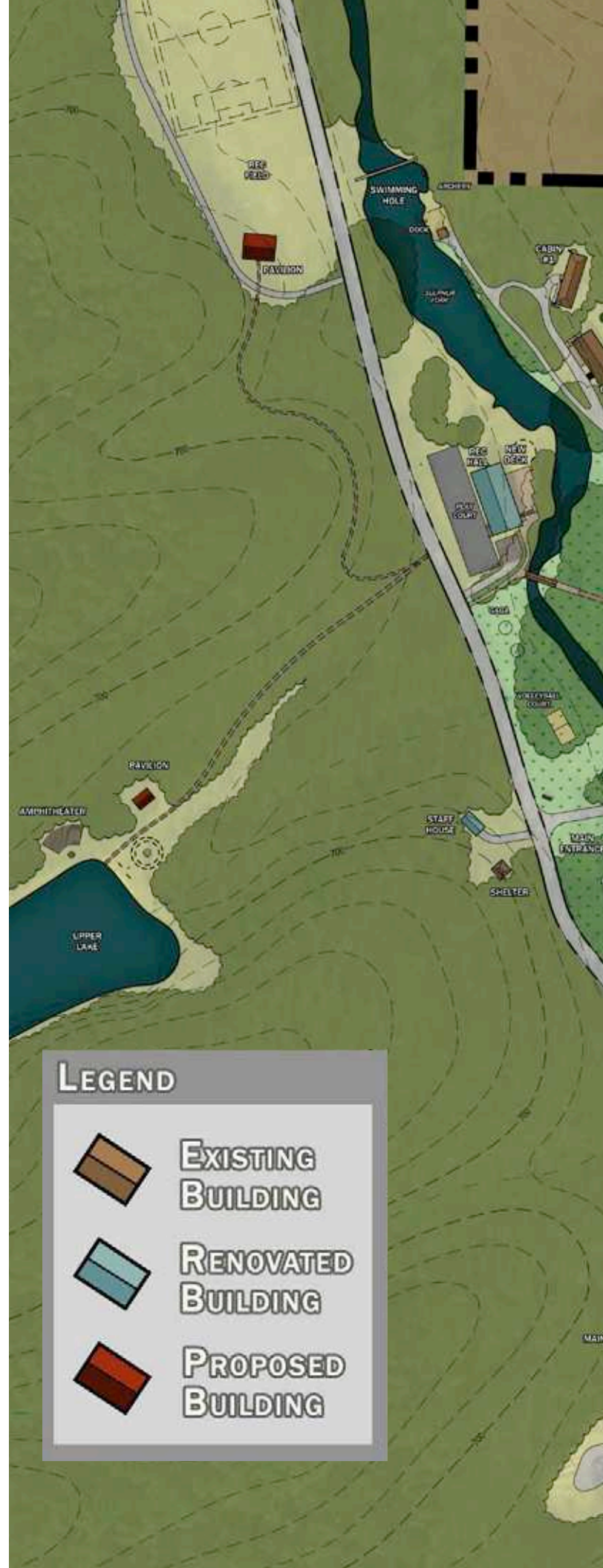
But already, this increased usage has also created a challenge. There is simply not enough meeting space to accommodate multiple groups at one-time.

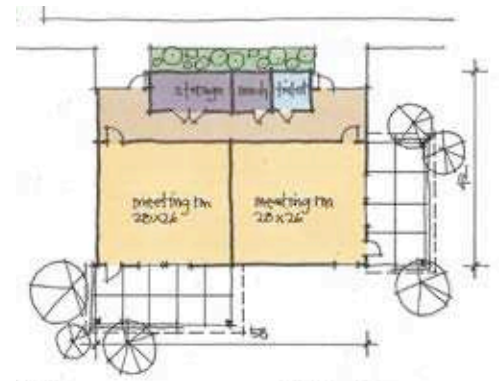


Additionally, today's adult guest requires a different level of comfort. Many guest groups do not utilize our top bunks, and many groups choose not to book because this is our only accommodation option.

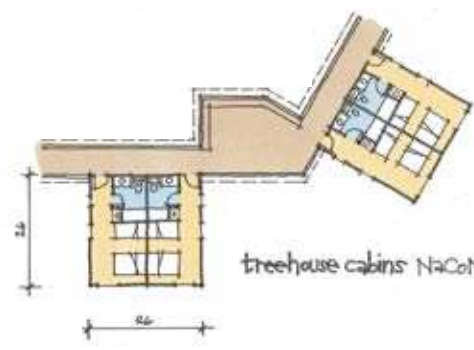
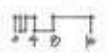
Additional meeting space and housing, along with better guest welcome and flow would allow multiple groups to be on-site at the same time, will increase the marketability and sustainability of the ministry and improve the efficiency of our staffing operations.

In order to accomplish this, we plan to take on the following projects:





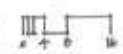
meeting center NaCoMe



treehouse cabins NaCoMe



welcome center NaCoMe



# The Plan

## PHASE I: \$3,175,000

### MEETING CENTER BUILDING 1 \$1,020,000

» Two new buildings will create the meeting center in the area of the Chapel. The area will be connected with a lawn and garden space in front of the Chapel.

The first of two new meeting spaces, Meeting Center Building 1 will allow for expanding use on weekends. This larger of the two Meeting Centers will include a meeting room that seats up to 100 people at table and chairs.

This building will also include central restrooms to service guests utilizing the Chapel or either meeting building as well as a café that can provide hospitality for all guests with coffee and drink service. An outdoor patio outside of the café, as well as a covered porch off the meeting room will provide wonderful access to the outdoors.

### WELCOME CENTER: \$300,000

» The new Welcome Center will increase hospitality and security for guests, by providing a central check-in and administrative space at the core of camp, just inside the main entrance. Additionally, the Welcome Center will have three private offices, a reception desk and a bathroom for guests to use as they arrive.

### STAFF HOUSE RENOVATION: \$20,000

» The addition of the Welcome Center will allow the current office building (across the road) to be utilized as it was originally designed as a staff house. This improved staff housing is essential to ensuring NaCoMe's ability to recruit and retain top leaders for our ministry.

### FAMILY LODGING TREEHOUSE DUPLEX 1 \$650,000

» This introduces a new style of lodging that will serve small families or couples. Each unit is designed as a double with two bedrooms per building. Each room is large enough for one queen bed and a bunk bed, allowing up to four people to sleep per room. A bathroom includes a sink, toilet and shower/bath. There is also a sink located in the entry way to the bathroom to allow a second person to have sink access while the bathroom is being used.

### FAMILY LODGE COTTAGE DUPLEX 1: \$385,000

» With the same layout as the Treehouse duplex, the Cottage Duplexes will be built at ground level to give accessible options to those we serve.

### MEETING CENTER BUILDING 2: \$550,000

» The smaller of the two meeting buildings will include two rooms that seat up to 40 people at table and chairs. This building will include an accessible restroom for those needing a closer facility. Covered porches are proposed off of each meeting room.

### PAVILIONS: (COTTAGES AND UPPER LAKE) \$100,000

### CAMPAIGN CAPACITY (STAFFING, CONSULTING, TRAVEL, EVENTS): \$150,000

The successful completion of Phase I, will allow NaCoMe to move directly into the following Phase II projects.

## Phase II: \$1,667,000

### GENERAL DRIVES, PATHS, PARKING, TRAILS: \$290,000

### STRUCTURE REMOVAL: \$17,000

### AMPHITHEATER AT UPPER LAKE: \$190,000

» This will add a new worship and gathering place at one of the most scenic and serene spots at camp.

### FAMILY LODGING TREEHOUSE DUPLEX 2: \$650,000

### RECREATION FIELD PAVILION: \$260,000

» The field pavilion facility will have a capacity for 100 people and include two restrooms. This will provide a shaded, central space for groups using this play field.

### REC HALL IMPROVEMENTS: \$260,000

» Adding a large porch and windows on the creek side to maximize the space and its connection to the water. These changes will make this space more usable in summer months.

*\*All costs include a 10% contingency*

In order to fund the complete development plan, the NaCoMe Board of Directors is launching the *Flow to the Future* Capital Campaign to secure funding from individuals, families, congregations, businesses, and foundations.

Gifts to the campaign may be received in the form of three-year pledges and one-time gifts. Gifts in the form of appreciated securities and gifts-in-kind are welcome. Naming, honor, and memorial gifting are also available to donors.

# OF GIFTS NEEDED	VALUE OF GIFT	RUNNING TOTAL
1	\$400,000	\$400,000
2	\$200,000	\$800,000
4	\$100,000	\$1,200,000
6	\$75,000	\$1,650,000
10	\$50,000	\$2,150,000
14	\$25,000	\$2,500,000
20	\$10,000	\$2,700,000
40	\$5,000	\$2,900,000
60	\$1,000	\$2,960,000
100	\$500	\$3,010,000
Many	<\$500	\$3,175,000
<b>300</b>		<b>\$3,175,000</b>



## Projected Campaign Timeline

### Jan 2020-June 2020

- » Campaign Leadership Recruitment
- » Leadership Gifts Begin

### July 2020-Feb 2021

- » Leadership Gifts Completed

### March 2021-March 2022

- » Congregational Campaigns

## Congregation Gifts Campaign

Each congregation will be asked to participate in this challenging campaign effort through a careful three step process.

**STEP 1** Receive a congregation council visit to learn the specifics of the campaign projects, timetable, and activities.

**STEP 2** Select a member of the congregation to serve as the campaign leader and have that selected leader attend a training program.

**STEP 3** Set a goal for the congregation and then conduct a five-week campaign effort that offers every member family of the congregation an opportunity to participate through a contribution.

## Congregation Goals

Each congregation will be asked to set a non-binding three-year goal for their campaign effort. Recommended goal levels are proposed on the basis of the average weekly worship attendance of the congregation. The following are the proposed goal levels for congregations.

<b>Basic Goal</b>	<b>\$100 per worshipper</b>
<b>Advance Goal</b>	<b>\$200 per worshipper</b>
<b>Challenge Goal</b>	<b>\$300 per worshipper</b>

For example, a congregation with an average weekly worship attendance of 100 persons could select from the following three-year goals:

<b>Basic Goal</b>	<b>\$10,000</b>
<b>Advance Goal</b>	<b>\$20,000</b>
<b>Challenge Goal</b>	<b>\$30,000</b>



**Contact Us**

3232 Sulphur Creek Road

Pleasantville, TN, 37033

931-729-9723

[director@nacome.org](mailto:director@nacome.org)

[www.nacome.org](http://www.nacome.org)